

Update: Research and Māori Health Research

Evidence, Research and Clinical Trials

Planning, Funding and Outcomes

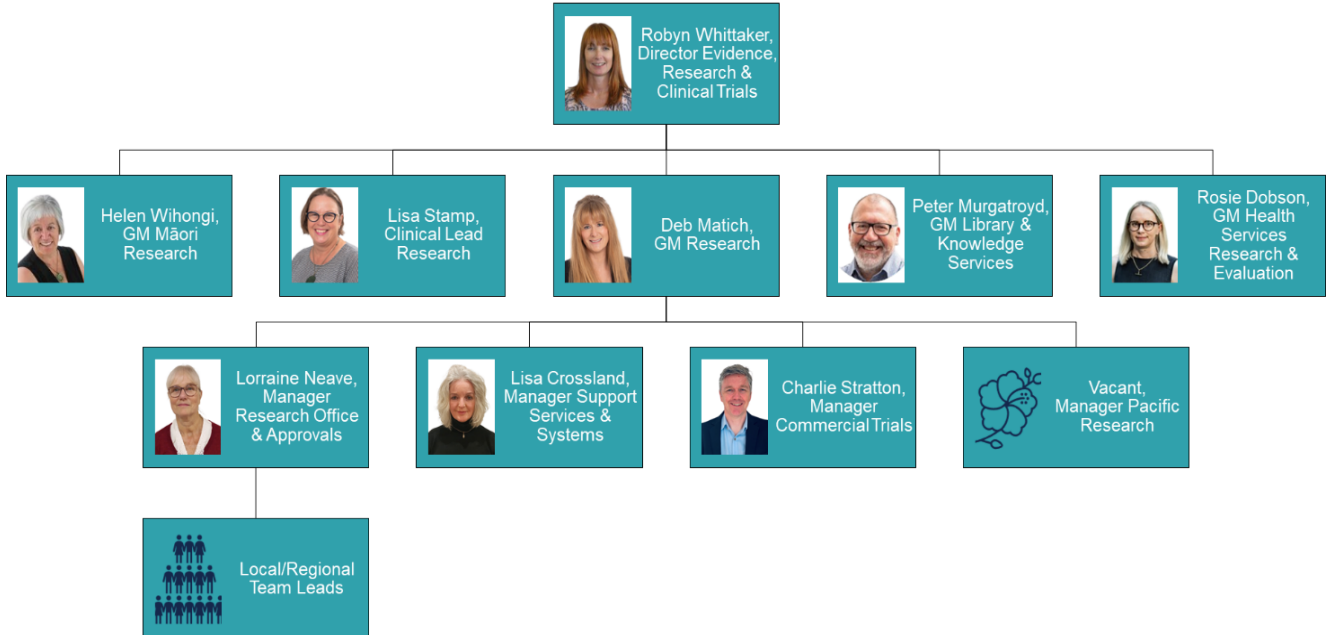
September 2024

Nau mai haere mai. Welcome to the quarterly update on the activities of the Research and Māori Health Research streams in the Evidence, Research and Clinical Trials (ERCT) team, now part of Planning, Funding and Outcomes.

This Update for Health NZ kaimahi will be of relevance to anyone interested in, or engaged in, research activities at Health NZ.

Please let Clinical Lead Research [Dr Lisa Stamp](#) know about any topics you would like to hear about in the future.

Who we are



Current activities

Research, Support and Governance

We are delighted to formally announce two new partnerships in the research space.

PRAXIS is one of Australia's leading research education providers and Health NZ has partnered to co-brand two courses containing various modules for research administration/support staff and emerging researchers. We will advertise course availability across all our hospital sites as they go live. Importantly Health NZ has localised the course materials to the New Zealand regulatory environment and for cultural safety. As a result, we know the course modules will be of great value to the wider eco-system. For more information please contact Manager Support Services and Systems, [Dr Lisa Crossland](#).

ClinTrial Refer is a free to download mobile app that allows patients and clinicians to find current clinical trials and to determine if a study may be suitable from the eligibility criteria and trial site location. Building on their pilot experience with the App, we have gone live with our Haematology trials, with Oncology trials next in line. Look for the Health NZ tile once the App is downloaded. For more information please contact Manager Commercial Trials, [Charlie Stratton](#).

We continue to build out our national research service delivery model, moving to standard contracting arrangements working closely with the national legal team and a new research overhead policy for commercial trial costs. For more information please contact Group Manager, [Deb Matich](#).

Our single research application project moves to the final stages of development using the already established northern region instance of the REDCap database. For more information please contact Manager Research Office and Approvals, [Dr Lorraine Neave](#).

We are pleased to offer a national biostatistics service led by senior biostatistician Dr Dug Yeo Han. The service provides collaborative support for our research faculty to include grant preparation, study design and planning, statistical analysis, manuscript preparation. Please contact [Dr Lisa Crossland](#) to discuss your requirements.

Health Services Research and Evaluation

The Health Services Research and Evaluation (HSR&E) service operating model involves both the provision of support/advice as well as leading the conduct of national health services research and evaluation across Health NZ. This allows us the privilege of being involved in a diverse range of mahi and working with a range of colleagues across the organisation. The work programme of the HSR&E team over the past few months has largely been focussed on leading three priority evaluations of projects within the Systems Pressures Plan. This includes evaluations of the Complex Discharge and Criteria Led Discharge initiatives happening across the motu, and the evaluation of the Pacific ED Pilot, an initiative run in the emergency department at Middlemore Hospital. Alongside this we have been working with the Pacific Directorate on the evaluation of the Pilot of a new model of care for Diabetic Retinal Screening in Counties Manukau and research to explore the acceptability and feasibility of the integration of AI into this service.

National Clinical Trials Infrastructure

Work has been underway with the Ministry of Health to consider how we might implement the recommendations of the [Enhancing Aotearoa New Zealand Clinical Trials report](#). Given the current fiscal constraints, we are focusing on what changes can be made within Health NZ to streamline research policies and processes while we consider more detailed options for clinical trials support. This work is likely to take some months and will be followed by consultation with the research sector both within Health NZ and more broadly.

If you would like more information about this work please get in touch with Clinical Lead Research [Dr Lisa Stamp](#) or Director Evidence, Research & Clinical Trials [Dr Robyn Whittaker](#).

Ethics

The review into the options for ethics support for researchers whose research falls outside the scope of Health and Disability Ethics Committees is well underway. We anticipate a draft proposal on the options by the end of Q4. If you would like input into this work please get in touch with Clinical Lead Research [Dr Lisa Stamp](#) or Director Evidence, Research & Clinical Trials [Dr Robyn Whittaker](#).

Rangahau Hauora Māori

In an endeavour to grow the research workforce, four Matariki Wananga were held in Tamaki Makaurau, Waikato, Whanganui-a-Tara and Otago. An evaluation of these workshops is underway and will be reported in the next newsletter. Briefly the wananga were well attended and research relationships built. Four regional Iwi Māori Partnership Boards have been supported to scope up their research priorities by Evidence, Research and Clinical Trials and the Hauora Māori Services Directorate in Te Whatu Ora. More work is required to grow the Māori reviewers across localities constrained by budget limitations. If you would like input into this work, please get in touch with Group Manager Māori Research, [Dr Helen Wihongi](#).

Ira Tātai Whakaheke (a group of Māori genomic and artificial intelligence (AI) experts) and the Manatū Hauora Precision Medicine (genomics and AI) Steering Group are working together to understand the risks and benefits of precision medicine in the health system in Aotearoa.

Contact us

Dr Robyn Whittaker
Director, Evidence Research & Clinical Trials
robyn.whittaker@tewhatuora.govt.nz

Dr Rosie Dobson
Group Manager, Health Services Research & Evaluation
rosie.dobson@waitemataadhb.govt.nz

Charlie Stratton
Manager Commercial Trials
charlie.stratton@tewhatuora.govt.nz

Debra Matich (MA)
Group Manager, Research
debramatich@tewhatuora.govt.nz

Peter Murgatroyd
Group Manager, Library & Knowledge Services
peter.murgatroyd@middlemore.co.nz

Daleen Iandoli
Executive Assistant to Robyn Whittaker
daleen.iandoli@tewhatuora.govt.nz

Dr Helen Wihongi
Group Manager, Māori Research
helen.wihongi@waitemataadhb.govt.nz

Dr Lorraine Neave
Manager Research Approvals/Office
lorraine.neave@waitemataadhb.govt.nz

Dr Lisa Stamp
Clinical Lead Research
lisa.stamp@cdhb.health.nz

Dr Lisa Crossland
Manager Research Support Services
lisa.crossland@northlandadhb.org.nz